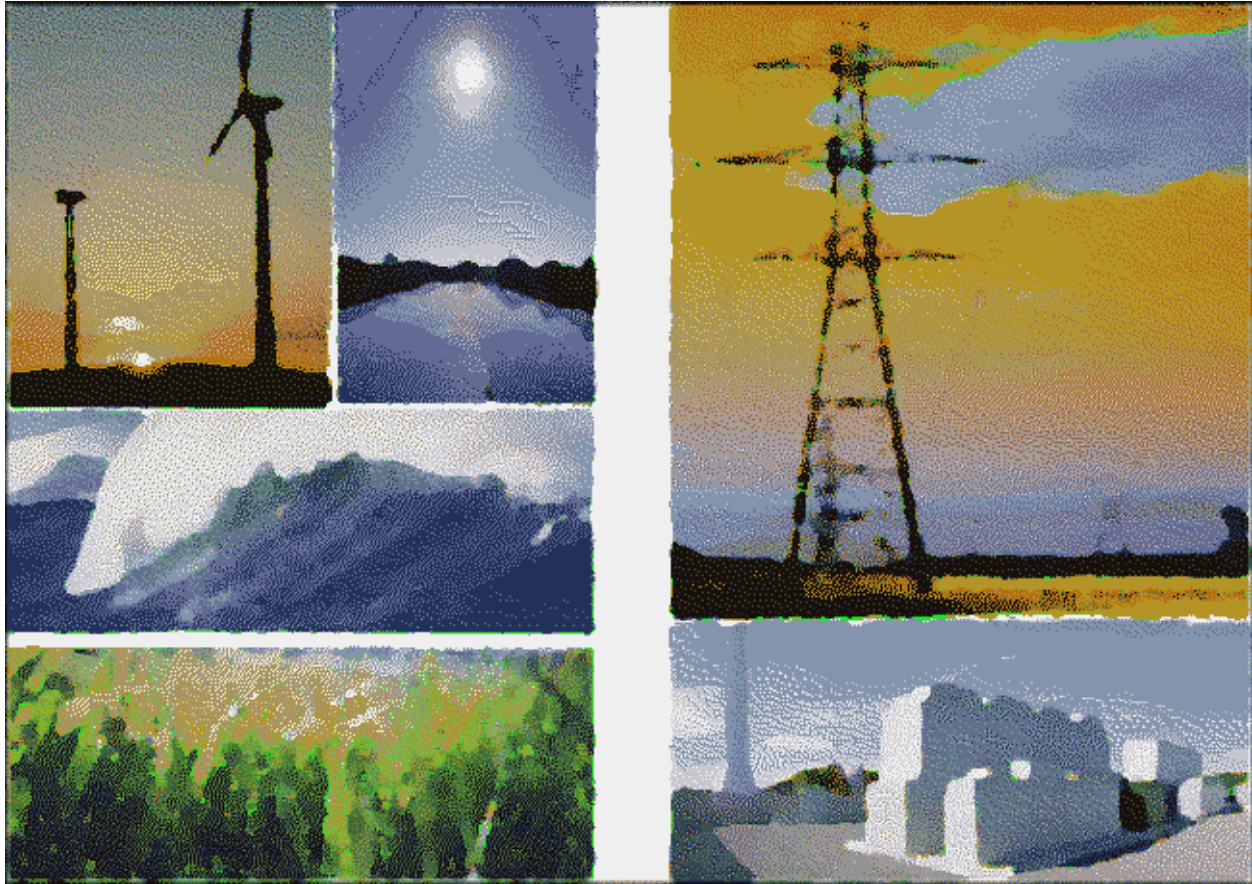


ProMaxLT™



Long-Term Energy & Transmission Reliability & Market Simulation SOFTWARE PACKAGE

ECCO International, Inc.
268 Bush Street, Suite 3633
San Francisco, CA 94104



Thank you for expressing an interest in our software by selecting the link to this document. We are currently composing an updated version of the ProMaxLT™ description, adding a narrative of the latest features and capabilities.

In the meantime if you would like more information please contact us at: davep@eccointl.com

Below are some highlights of ProMaxLT™ capabilities:

- Full-fledged Security Constrained Unit Commitment/Security constrained Economic Dispatch with detailed transmission modeling (AC & DC options are available) and sequential Monte-Carlo simulations to model various uncertainties
- Mimics exactly the clearing of the Nodal based ISO markets
 - Approximations are also available, such as the Zonal Model
- High performance
- Can include explicit transmission (base and contingency) constraints in Monte-Carlo modeling
- Probabilistic loads and intermittent resources
- Flexibility modeling
- Interoperability Studies,
 - Integrated with a partner software modeling natural gas
- Resource Modeling
 - Conventional Resources with full range of unit capabilities
 - Intermittent Resources
- Transmission Modeling
 - Either Zonal or Full DC Network
 - ProMaxLT™ is robust and efficient to run with a full unreduced DC model if necessary (we have been using it in this mode for many years to serve our clients)
 - A 24 hour SCUC solution with an un-reduced DC model takes about 4 seconds for a 24 hour simulation for a 4,000 bus system (Includes 48 4,000 bus DC power flows and 2 LP dispatches)
- Highly Configurable.